



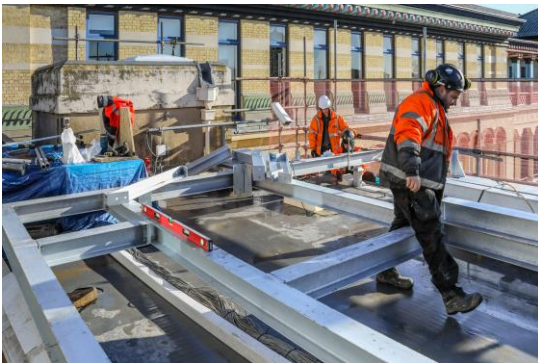
UNIVERSITY OF  
CAMBRIDGE

# Housing Advisor

Estates Division

Closing date: 20<sup>th</sup> July 2025

Job Reference: DE46475



# Housing Advisor

**Salary:**

£30,805 - £35,116 pa

*In addition to the base salary stated above, the successful candidate for this post will receive an additional 2.5% supplement to their pay.*

**Contract:**

Permanent

**Location:**

Cambridge

**Department:**

Accommodation Service

**Working Pattern:**

Full Time

The University of Cambridge has a Hybrid Working Policy that aims to enable as many staff as possible to work in a hybrid way if they so wish, whilst recognising that some roles will include tasks that can only be performed on University premises.

**Purpose of the role**

Deliver a high quality, customer focussed, comprehensive and responsive housing management service to those residents moving into and living in University residential accommodation. Housing Advisors are responsible for all aspects of the through-life tenancy management of a defined allocation of University Housing and estate area, acting as the primary point of contact in Housing Services in respect to their designated portfolio in order to contribute to an attractive and sustainable neighbourhood and community.

Key aspects of the role include: establishing and maintaining positive relationships with tenants; maintaining an awareness of day-to-day property operations and maintenance issues; delivering the move-in, renewals and move-out processes with residents; being available as the first point of contact for residents and offering support and guidance accordingly; maintaining oversight for all aspects of their designated portfolio including health and safety matters; supporting other members of Housing Services as required.



# Key responsibilities

1. Day-to-day accountability for their designated housing portfolio and primary focal point for all residents within, while supporting other Housing Advisors and tenants across the wider residential estate.
2. Manage the resident move-in process including: ensuring compliance, Right to Rent and other certificates are in place to meet statutory requirements; meet, greet and orientate new residents, including property induction, guidance on utilities, council tax and maintaining a sustainable tenancy, and following up on any queries; check inventory and advise on health & safety, fire safety requirements, and tenancy regulations with all new residents.
3. Maintain estate awareness across their allocated housing portfolio, facilitated by regular, routine and visible visits, inspections and continued engagement with residents, including arranging resident meetings.
4. Inspecting properties prior to, during and at the end of tenancies, requiring daily liaison with contractors to ensure that the University's residential properties and grounds are kept in a good state of repair, maintenance and cleanliness.
5. Oversee all tenancy conduct, which includes addressing breaches of tenancy agreements, including taking action to resolve anti-social behaviour and nuisance issues; dealing with unauthorised occupiers; chasing rent arrears – any of which could culminate in the start of eviction processes.
6. Arrange any repair works and ensure that they are appropriate and cost effective in vacant properties. and undertake day to day liaison with tenants, operations staff and contractors as required.
7. Embrace a Health and Safety culture, identifying and elevating as required any identified risks or behavioural issues present. Report incidents using appropriate procedure.
8. Contribute to the continual improvement of Housing Services policies and procedures, identifying areas for change and highlighting best practice as appropriate.
9. Support members of the Housing Services team, provide cover for other Housing Advisors and deputise for the Deputy Head as required. Train other members of staff as required.
10. Other duties commensurate with the role as requested by the Head of Department or other senior managers.

# Person Specification

Criteria	Essential	Desirable
<b>Experience</b>		
Minimum of 3 years previous work experience in the property rental sector covering residential letting, handling landlord/tenant relations, deposit protection, housing legislation and property inspections.	✓	
Effectively resolving disputes between residents or between tenants and management	✓	
Providing excellent customer service to enhance tenant satisfaction, community relations, collaborations with other stakeholders	✓	
Knowledge of Housing management legislation, basic building construction and relevant Government policy and an understanding of current housing issues.		✓
<b>Skills</b>		
Working effectively with other team members and departments.	✓	
Ability to communicate clearly and effectively (written and verbally) with residents, team, contractors and stakeholders.	✓	
Identifying and resolving issues promptly and effectively	✓	
Dispute conflict resolution and negotiation	✓	
Working effectively under pressure of time and working alone	✓	
Sound decision making and analytical skills	✓	
Ability to use management software systems and tools effectively.	✓	
<b>Qualification</b>		
A level standard of education/ qualification equitable to HNC/HND, level 4/5 vocational qualifications or an equivalent level of practical experience	✓	
Relevant professional qualification (CIH or similar)	✓	

A minimum of 5 GCSEs which should include English and Maths to GCSE level Grade 5 or above	✓	
<b>Additional Requirements</b>		
Flexibility to carry out other Housing Services Tasks when necessary, in particular during peak turnover periods.	✓	
Valid UK driving licence.		✓
Some evening and weekend work in respect to appointments and meetings may be required with notice.	✓	
Willingness to respond to out of hours emergency calls and to comply with Business Continuity Plans.	✓	



# Behavioural Attributes

This section summarises the behavioural attributes (or competencies) that we expect the role holder to be able to demonstrate, at what level and whether this is an essential or desirable requirement. Full definitions are at: <https://www.hr.admin.cam.ac.uk/policies-procedures/behavioural-attributes>

Please review these and provide specific examples in your application of how you have demonstrated these attributes in your work, education or other experience. It will assist your application if you explain the situation, what you did and what the outcomes were.

Attribute	Level
Valuing Diversity	A
Achieving Results	C
Communication	C
Innovation and Change	C
Negotiating and Influencing	D
People Development	C
Relationship Building	C
Strategic Focus	D

# Professional Services Values

Developed by professional services staff, our values underpin everything we do. By living the values in the work we do, we hope to foster an environment where staff feel empowered. The values encourage staff to; work together and share skills to create a sense of community, act with integrity, take an inclusive and fair approach and develop honest and open relationships that are underpinned by our shared values. We encourage applicants to consider these values within their application.



# The Housing Services Team

## **Estates Operations**

The Estates Operation function works to continuously provide safe, compliant, effective and efficient facilities and services enabling the University to contribute to society through the pursuit of education, learning and research at the highest international levels of excellence.

The team manages and maintains the University's buildings and land, including housing providing essential services to ensure that students, staff, and visitors have access to safe, well-maintained facilities and excellent services.

## **Housing Services**

Housing Services provides great places to live with a focus on managing the University's residential estate to meet the diverse needs of students and staff within a supportive, well-maintained and sustainable living environment.

The team provides an end-to-end Housing Service managing requests, fulfilment, letting, on-boarding, tenancy management, repairs and maintenance and estate management.



# The Estates Division

Estates Division employees are responsible for the development, management and maintenance of one of the largest higher education estates in the UK.

Our vision for the University's estate is to support the University's academic mission by developing facilities and links that better connect people across our estate, within our sites, and inside our buildings.

By delivering higher quality and more welcoming places that encourage collaboration and that promotes an inter-connected community of scholars, we will improve academic outcomes in a way that also uses our estate more intensively.

This will create vibrant spaces that will improve both the staff and student experience and their wellbeing in a way that is more enjoyable and supportive for all our people, as well as being more biodiverse and sustainable, all at a lower cost, enabling reinvestment back into research and teaching.

We will achieve this by:

- Creating a more effective, efficient and environmentally sustainable estate by implementing a Strategic Estate Framework and 20+ year Capital Plan that supports the future development of the estate.
- Delivering world-class, safe and compliant teaching, research, and operational spaces across the University by operating and maintaining buildings and facilities to an exceptional standard.
- Enabling the University to deliver against its environmental commitments by leading the environmental sustainability agenda and improving the environmental performance of the estate and associated operations, covering carbon, energy, water, waste, transport, and biodiversity.
- Providing innovative and well-utilised spaces that deliver strong financial returns for the University by managing the commercial and residential estate including academic and business partnerships.





# Terms of Appointment

## Tenure and probation

Appointments will be made on a permanent.

Appointments will be subject to satisfactory completion of a six-month probationary period.

## Hours of Work and Working Pattern

The hours of work for the position are 36.5 hours per week, working Monday – Friday.

## Pension

You will automatically be enrolled to become a member of CPS (Contributory Pension Scheme) – a defined benefit and defined contribution pension scheme. For further information please visit: [www.pensions.admin.cam.ac.uk/](http://www.pensions.admin.cam.ac.uk/).

## Annual leave

Full time employees are entitled to annual paid leave of 36 days inclusive of public holidays. For part-time employees, annual leave will be pro rata'd based on days worked.

## General information

### Pre-employment checks

#### Right to work in the UK

We have a legal responsibility to ensure that you have the right to work in the UK before you can start working for us. If you do not have the right to work in the UK already, any offer of employment we make to you will be conditional upon you gaining it.

#### Health declaration

Once an offer of employment has been made the successful candidate will be required to complete a work health declaration form.

## Qualifications

The person specification for this position lists qualifications that are essential and/or desirable. Please note that if you are offered the post you will be asked to provide your relevant original certificates of these qualifications.

## References

Offers of appointment will be subject to the receipt of satisfactory references.

## Screening Checks:

This role requires a basic disclosure/ standard Disclosure and Barring Service (DBS) Check/an enhanced Disclosure and Barring Service (DBS) check/a security check. Any offer of employment we make to you will be conditional upon the satisfactory completion of this/these check(s); whether an outcome is satisfactory will be determined by the University. The nature of this role means that the successful candidate will also need to undergo a health assessment.

## Information if you have a disability

The University welcomes applications from individuals with disabilities. We are committed to ensuring fair treatment throughout the recruitment process. We will make adjustments to enable applicants to compete to the best of their ability wherever it is reasonable to do so and, if successful, to assist them during their employment. Information for disabled applicants is available at <http://www.admin.cam.ac.uk/offices/hr/staff/disabled/>

We encourage you to declare any disability that you may have, and any reasonable adjustments that you may require, in the section provided for this purpose in the application form. This will enable us to accommodate your needs throughout the process as required. However, applicants and employees may declare a disability at any time.

If you prefer to discuss any special arrangements connected with a disability, please contact, the Department Administrator, who is responsible for recruitment to this position.

# The University

The University of Cambridge is consistently ranked one of the best universities in the world, achieving academic excellence through its Faculties, Departments and other Institutions, together with the 31 Colleges.

The University is renowned for its record of discovery and innovation. It is one of the great institutions, with a regional, national and global reach, attracting the very best and brightest minds. Our staff and students shape the world around us for the better: we attract and partner with like-minded people.

Whether contributing to the development of new anti-cancer drugs, adding to the understanding of how black holes are formed, revolutionising the study of ancient settlements, convening academic expertise to offer solutions to the climate crisis, or analysing public attitudes towards democracy around the world, the University's research is remarkable in its breadth, quality and impact. The University also sits at the heart of Europe's largest technology cluster and has catalysed more than 1,500 high-tech companies. And yet what inspires our 24,000 students and 13,000 staff is not what has already been achieved, but what is possible in the future.

The education and experience of our students, based on a partnership between the University's academic Departments and Faculties and the 31 Colleges, is second to none. Every student is a member of one of the Colleges, each a community of students, academics and staff drawn from across the University's comprehensive range of subject areas.





The University is a self-governing community, with a system for decision-making that provides a high degree of accountability and transparency to its members. Each Department and Faculty is part of one of six academic Schools, but each of them, and each individual academic, has a great deal of autonomy. The Colleges are independent and self-governing, working in a symbiotic relationship with the University.

The University has a number of Institutions that are independent of any Faculty or Department and are not part of the academic Schools. These include the Institute of Continuing Education (which provides high-quality education to adults throughout their lives), the Fitzwilliam Museum, Kettle's Yard (an historic house and gallery that holds important collections of modern art) and the University Library. In addition to their diverse contributions to University and public life, these non-School Institutions are also important centres of teaching and research.

Cambridge University Press & Assessment provides academic publishing, examinations and learning materials worldwide, supporting the dissemination of research, academic development at school and in higher education, and international student mobility. Legally, the Press & Assessment is a department of the University. It provides very important funds to invest in the academic purposes of the University.

The University has made truly remarkable contributions to the sum of human understanding, with breakthrough ideas and discoveries that have changed the way we understand ourselves, our planet, and the universe around us. Yet the global and national contexts in which it operates are fast-changing and increasingly filled with uncertainty. In a world that is becoming - politically, economically, socially, and technologically – ever more interconnected but even less equal, the University's mission – “to contribute to society through the pursuit of education, learning and research at the highest international levels of excellence” – has never been more relevant.



# About Us

**The University is one of the world's leading academic centres. It comprises 150 faculties and departments, together with a central administration and other institutions. Our institutions, museums and collections are a world-class resource for researchers, students and members of the public representing one of the country's highest concentrations of internationally important collections.**

The University has an annual income of £2 billion. Research income, won competitively from the UK Research Councils, the European Union (EU), major charities and industry, exceeds £500 million per annum and continues to grow.

The Colleges and the University remain committed to admitting the best students regardless of their background and to investing considerable resources both in widening access and financial support. The 31 Colleges are self-governing, separate legal entities which appoint their own staff. Many academic staff are invited to join a College as a Teaching Fellow, which provides a further social and intellectual dimension. The Colleges admit undergraduate students, provide student accommodation and pastoral support and deliver small group teaching for undergraduates.

The University awards degrees and its faculties and departments provide lectures and seminars for students and determine the syllabi for teaching.

Our instinct for seeking out excellence and setting up enduring and mutually beneficial collaborations has led us to establish strategic partnerships across the globe. Whether it is the successful Cambridge-Africa Programme involving universities in Ghana, Uganda and elsewhere on the African continent; or the close association with the government of India to pursue new research in crop science; or the creation, with Germany's Max Planck Institutes, of a Cambridge-based centre for the study of ethics, human economy and social change – international partnerships are now an inextricable part of the University's make-up.

“Through its outstanding education, research and innovation, the University of Cambridge has made – and continues to make – a lasting contribution to human knowledge and is flourishing. By working at the University of Cambridge, you will be joining a vibrant community of students, scholars and professional services staff committed to supporting and enhancing the University's mission to contribute to society.”

*Professor Deborah Prentice,  
Vice Chancellor 2023*





# Working at the University

**Working at Cambridge you will join a diverse, talented and innovative community, with more than 24,000 students and over 13,000 staff from all walks of life and corners of the world.**

The University continually explores strategies to attract and retain the best people. It is committed to supporting its staff to achieve their best. We are a fair, diverse and inclusive society and we believe our staff are our greatest asset. There is strong commitment to developing institutional leadership and supporting and encouraging staff development at all levels.

The University offers a variety of roles including academic, research, professional, managerial and support roles. We also offer extensive benefits and excellent learning opportunities within a stimulating working environment.

The University's estate is undergoing the most significant transformation in its history. Cambridge has been able to create a science and technology campus to the west of the city centre, and is expanding further to the north west of Cambridge including investing in affordable homes for University key workers and community facilities. Even with their continued development, the University remains within walking or cycling distance across the campus. The University is a major partner on the Cambridge Biomedical Campus and continues to redevelop its historic city centre sites demonstrating a clear determination to ensure that we can offer the best facilities and opportunities for our staff and students.



## Equality, Diversity and Inclusion

The University has built its excellence on the diversity of its staff and student community. We aim to be a leader in fostering equality and inclusion, and in promoting respect and a sense of belonging for all. We encourage applications from all sections of society. All appointments are made on the basis of merit. We have an Equal Opportunities Policy, along with a range of diversity groups, including the Women's Staff Network, Race Equality Network and LGBT+ Staff Network. More details are available here:

<http://www.equality.admin.cam.ac.uk/>

The University has a bronze Race Equality Charter award, with a framework for improving the representation, progression and success of minority ethnic staff and students within higher education. Furthermore, the University's silver Athena swan award recognises and celebrates good practice in recruiting, retaining and promoting gender equality.

# Living in Cambridge

Cambridge is rich in cultural diversity. From beautiful University and College buildings, museums and art galleries, quaint gardens and punts on the River Cam, to a vibrant restaurant and café scene, our employees are surrounded by the wonderful features of this unique city.

You can find a wide-range of high street shops and 3 shopping centres, with independent alternatives at the historic market and nestled within the passageways in the city centre. You will find a cinema, bowling alley, a nightclub and various live performances at the Cambridge Leisure Park, with further entertainment options at the Corn Exchange, Arts Theatre and the ADC Theatre. Further information can be found on the Visit Cambridge website.

If you prefer the faster pace of life, London is a 45-minute train journey away. For those travelling from overseas, Stansted Airport is just 45 minutes away and Heathrow Airport under 2 hours away. The University is a short distance from a host of other attractions such as Ely Cathedral, Newmarket Races and various wildlife parks and stately homes. Cambridge is also within easy reach of the beautiful Broads and coastlines of Norfolk and Suffolk.

## Relocation Support

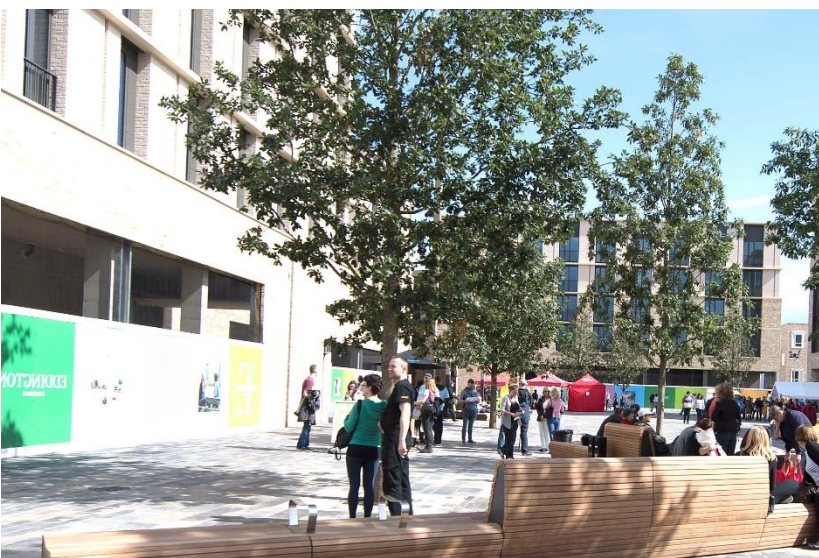
The University recognises the importance of helping individuals to move and settle into a new area. We provide support and guidance to those relocating internationally or domestically to take up a post at the University of Cambridge, liaising with other University offices and selected partners to ensure comprehensive relocation support is available. This includes: accommodation, childcare, schools, banking, immigration and transport. If you would like further information, please visit

<https://www.accommodation.cam.ac.uk/RelocationService/>. The Shared Equity Scheme and the Reimbursement of Relocation Expenses Scheme provide financial assistance to qualifying new members of

## Accommodation Service

The University Accommodation Service helps staff, students and visiting scholars who are affiliated to the University in their search for suitable accommodation in Cambridge. The dedicated accommodation team can provide access to a wide range of University-owned furnished and unfurnished properties, and has a database of private sector accommodation available for short and long-term lets. For further information and to register with this free service please visit:

<https://www.accommodation.cam.ac.uk/>





# What Cambridge can offer

**We offer a comprehensive reward package to attract, motivate and retain high performing staff at all levels and in all areas of work.**

The University offers a wide range of competitive benefits, from family leave entitlement, to shopping and travel discount schemes. Our generous annual leave package contributes to the positive wellbeing of our University employees. Sabbatical leave enables academics to focus on research and scholarship, whilst still maintaining their full salary. The University also has a [career break scheme](#) for academic and academic-related staff, with additional flexible working policies for all other staff.



## Pay and benefits

The University salary structure includes automatic service-related pay progression in many of its grades and an annual cost of living increase. In addition to this, employees are rewarded for outstanding contribution through a number of regular pay progression schemes. The University offers attractive pensions schemes for employees, with an additional benefit of a salary exchange arrangement providing tax and national insurance savings.

## CAMbens employee benefits

The University offers employees a wide range of competitive benefits, known as CAMbens. CAMbens offers something for everyone across a range of categories, including:

- Financial Benefits, including shopping discounts (both local and national) and a Payroll Giving scheme;
- Relocation and Accommodation Benefits, including relocation assistance and interest-free Rental Deposit Loans;
- Travel Benefits, including Cycle to Work, discounts on train season tickets and interest-free Travel to Work loans;
- Family Friendly and Lifestyle Benefits, including support with childcare and family friendly policies;
- Health and Wellbeing Benefits, including a University Staff Counselling Service, discounts at the University Sports Centre, and other local gyms, and healthcare schemes.



# What Cambridge can offer

## Family-friendly policies

The University recognises the importance of supporting its staff. We have a range of family-friendly policies to aid employees' work-life balance including a generous maternity, adoption and shared parental leave entitlement of 26 weeks' full pay, and paid emergency leave for parents and carers.

Other family-friendly support includes:

Our highly regarded workplace nurseries, a childcare salary exchange scheme and a high-quality holiday Playscheme are available to help support University employees with caring responsibilities (subject to demand and qualifying criteria). Further childcare information can be found here:

<https://www.childcare.admin.cam.ac.uk/>

The Newcomers and Visiting Scholars Group (<https://www.nvs.admin.cam.ac.uk/>) is an organisation within the University that welcomes the partners and families of visiting scholars and new members of the University. Run by volunteers, the group offers opportunities to visit interesting Cambridge venues, learn about the community, take part in social events and gain local knowledge while developing a strong support network of both residents and other newcomers.

## Your wellbeing

The University's Sport Centre, Counselling Services and Occupational Health are just some of the support services available to University employees to promote their physical and mental wellbeing. The University delivers The Festival of Wellbeing annually, which is a programme of stimulating talks and activities, which aim to promote wellbeing and good mental and physical health. The University also hosts the [Cambridge Festival](#), which is a great opportunity to get your first taste of public engagement, through volunteering, supporting hands-on activities or proposing a talk.

## Development opportunities

We support new employees to settle in through various activities as well as supporting their professional and career development on an ongoing basis. Our Personal and Professional Development (PPD) team provide development opportunities for all University employees, including face-to-face sessions, online learning modules and webinars. All employees also have unlimited access to LinkedIn Learning to support their development. Both new and existing employees can undertake funded Apprenticeships, which lead to a range of vocational and professional qualifications. We offer reduced staff fees for University of Cambridge graduate courses and the opportunity to attend lectures and seminars held by University departments and institutions. A range of University training providers also offer specialist learning and development in their own areas e.g. teaching and learning, digital literacy, finance, health and wellbeing, safety.





# How to apply

Applications should be submitted online via the University of Cambridge jobs page [www.jobs.cam.ac.uk](http://www.jobs.cam.ac.uk) by clicking “Apply online” in the job advert. You will need an email address to register for our online system.

Conversations about flexible working are encouraged at the University of Cambridge. Please feel free to discuss flexibility prior to applying (using the contact information below) or at interview if your application is successful.

If you have any queries regarding the application process, please contact: **The ED HR Team at [EDR@admin.cam.ac.uk](mailto:EDR@admin.cam.ac.uk)**

The closing date for applications is: 20<sup>th</sup> July 2025

