

Year Abroad Administrator (Part time, Fixed Term)

Faculty of Modern and Medieval Languages and
Linguistics

Closing Date: Thursday 7th August 2025

Job Reference: GP46391



Year Abroad Administrator

Salary:

£26,942—£30,805 pro rata

Contract:

Fixed-Term for 2 years

Location:

Central Cambridge

Faculty:

Faculty of Modern and Medieval Languages and Linguistics

Working pattern:

Part-time - 0.6 FTE

The University of Cambridge has a Hybrid Working Policy that aims to enable as many staff as possible to work in a hybrid way if they so wish, whilst recognising that some roles will include tasks that can only be performed on University premises.

Purpose of the role

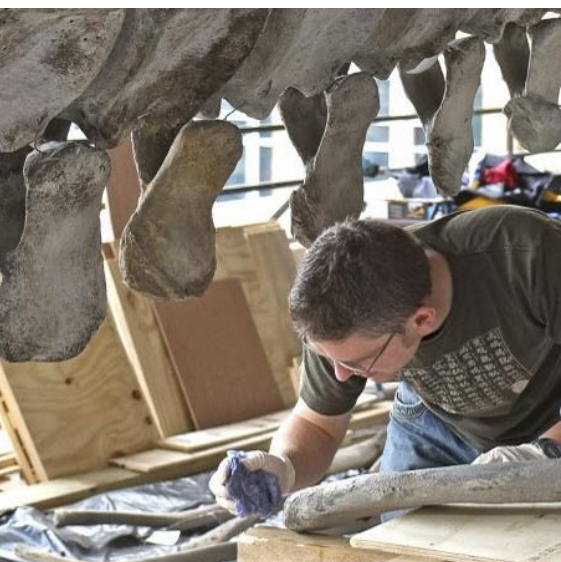
The Year Abroad (YA) is an important and compulsory element of the Modern and Medieval Languages (MML) undergraduate course and involves the coordination of work and study places for up to 180 students per year.

The YA team supports the Year Abroad Director with developing and communicating information to students, assisting with planning, approving plans and risk assessments and monitoring progress throughout the year.

The role holder works with key members of academic and professional services staff and students in the Faculty as well as colleagues in the International Student team, Finance and Safety offices, our Student Registry and colleges. This is a key role in ensuring that students are fully prepared to ensure a successful year abroad.

Key Responsibilities:

- Act as first point of contact for students planning their year abroad offering practical support prior to and during their YA and directing to relevant colleagues in colleges and the University as required.
- Develop and update information and resources for students including handbooks, online guides, training and bespoke correspondence. Share materials with colleagues as relevant.
- Produce and regularly update factsheets on international universities /institutions and other information materials used by students in the planning of their YA.
- Ensure accurate administering of fee reimbursement and budget monitoring in partnership with the Faculty Accounts Team.
- Collect and maintain student data relating to the YA to monitor and report on e.g. plans, applications, placements and financial arrangements as required.



Year Abroad Administrator

Key Responsibilities Continued:

- Keep records of applications for Study Placements. Liaise with officers at partner institutions regarding student nomination processes and send details of students taking up placements as required.
- Identify potential problems with plans / reports and bring to the attention of the Year Abroad Director in a timely manner. Note any new country- specific trends in particular using advice issued by the Foreign and Commonwealth Office (FCO).
- Maintain oversight of changes to YA requirements in the Faculty, University and across the sector, considering how processes may need to be reviewed as a result.
- Keep up to date on systems available that may improve the YA administration experience and suggest changes where appropriate.
- Meet regularly with Faculty colleagues to ensure all are up to date on current status and procedures.
- Review and approve student study and work placement risk assessments, liaising closely with the Safety Office.

Professional Services Values

Developed by professional services staff, our values underpin everything we do. By living the values in the work we do, we hope to foster an environment where staff feel empowered. The values encourage staff to; work together and share skills to create a sense of community, act with integrity, take an inclusive and fair approach and develop honest and open relationships that are underpinned by our shared values. We encourage applicants to consider these values within their application.



Person specification

	Essential	Desirable
Education and Qualifications		
Educated to A-level standard/NVQ level 3 or an equivalent level of practical experience.	✓	
Specialist Knowledge and Skills		
Excellent organisational, time management and prioritisation skills	✓	
Experiences user of Microsoft Office applications (Outlook, Word, Excel)	✓	
Experienced user of presentation software (PowerPoint), databases (Access) and web editing software		✓
High degree of accuracy and excellent attention to detail	✓	
Ability to work independently using own initiative (including problem solving as the ability to contribute as an active team member in collaborative and supportive manner	✓	
Ability to learn new skills quickly and apply them to the role, including a willingness to embrace changing technologies as required	✓	
Interpersonal and Communications Skills		
Excellent communication & interpersonal skills	✓	
Ability to build and maintain good working relationships with a wide range of colleagues	✓	
Ability to maintain professional behaviour which represents the Faculty in a positive light	✓	
Relevant Experience		
Secretarial or administrative experience, preferably gained in a Higher Education environment	✓	
Experience of successfully implementing and contributing towards the development of administrative systems and processes	✓	
Experience of establishing and maintain electronic filing and information systems an ensuring data quality	✓	
Experience of seeking out best practice and implementing change		✓
Experience and knowledge of University of and Cambridge polices, regulations and procedures		✓

The Faculty of Modern and Medieval Languages and Linguistics



The Faculty of Modern and Medieval Languages and Linguistics, founded in 1879, is a world-leading centre for teaching and research in language, culture and linguistics at the University of Cambridge and is part of the School of Arts and Humanities. The Faculty comprises eight subject areas: French, German, Italian, Modern Greek, Slavonic Studies, Spanish & Portuguese, Theoretical & Applied Linguistics, and Film. With nearly 1,000 students (over 770 undergraduates, 65 MPhil students and 140 PhD students) we are one of the largest humanities Faculties in the University and one of the largest languages Faculties nationally.

The Faculty combines excellence in teaching, academic rigour and research with a strong tradition of pastoral support for its students. It is a vibrant place to study and work, and since 2016 these factors have regularly helped it top University league tables. In terms of research excellence, the Faculty has consistently been ranked among the very best in the world in national and international assessments. For example, in the 2021 Research Excellence Framework (REF) it was in clear first position for 'research power' among Faculties of its type in the UK.

The school of Arts and Humanities



The School of Arts and Humanities is one of six schools in the University and it currently comprises of:

- Faculty of Asian and Middle Eastern Studies
- Faculty of Architecture and History of Art
- Faculty of Classics
- Faculty of Divinity
- Faculty of English
- Faculty of Modern and Medieval Languages and Linguistics
- Faculty of Music
- Faculty of Philosophy
- Centre for Research in the Arts, Social Sciences and Humanities
- University of Cambridge Language Centre
- Institute for Technology and Humanity

The School's institutions together have over 700 staff and 3,500 students, with an annual budget in excess of £45 million. The School has recently agreed a new strategic plan, which sets out its overarching vision and objectives.

Vision

The Strategic Vision of the School of Arts and Humanities is to retain its position in the world top five. We see this not as a simple metric but as a challenge for which we must foster a culture and practice of openness: to countries and traditions around the globe, to major themes, to new ways of teaching, to diversity in our student intake and staff recruitment, to inclusiveness in our career development, and to the breaking down of structures that prevent us achieving the ambitious goals we set ourselves.

Terms of appointment

Tenure and probation

Appointments will be made on a fixed-term basis for a period of 2 years due to limited funding.

Appointments will be subject to satisfactory completion of a six month probationary period.

Hours of Work and Working Pattern

The position is part time at 0.6 FTE. The hours of work for the position are 21.9 hours per week. We welcome applications from individuals who wish to be considered for flexible working arrangements.

Pension

You will automatically be enrolled to become a member of CPS (Contributory Pension Scheme) – a defined benefit and defined contribution pension scheme. For further information please visit:

www.pensions.admin.cam.ac.uk

Annual leave

Full time employees are entitled to annual paid leave of 36 days inclusive of public holidays. For part-time employees, annual leave will be pro rata'd based on days worked.

General information

Pre-employment checks

Right to work in the UK

We have a legal responsibility to ensure that you have the right to work in the UK before you can start working for us. If you do not have the right to work in the

UK already, any offer of employment we make to you will be conditional upon you gaining it.

Health declaration

Once an offer of employment has been made the successful candidate will be required to complete a work health declaration form.

Qualifications

The person specification for this position lists qualifications that are essential and/or desirable. Please note that if you are offered the post you will be asked to provide your relevant original certificates of these qualifications.

References - offers of appointment will be subject to the receipt of satisfactory references.

Information if you have a disability

The University welcomes applications from individuals with disabilities. We are committed to ensuring fair treatment throughout the recruitment process. We will make adjustments to enable applicants to compete to the best of their ability wherever it is reasonable to do so and, if successful, to assist them during their employment. Information for disabled applicants is available at <http://www.admin.cam.ac.uk/offices/>

hr/staff/disabled/.

We encourage you to declare any disability that you may have, and any reasonable adjustments that you may require, in the section provided for this purpose in the application form. This will enable us to accommodate your needs throughout the process as required. However, applicants and employees may declare a disability at any time.

If you prefer to discuss any special arrangements connected with a disability, please contact, the School HR Team at MMLLPersonnel@admin.cam.ac.uk, who are responsible for recruitment to this position.

The University

The University of Cambridge is consistently ranked one of the best universities in the world, achieving academic excellence through its Faculties, Departments and other Institutions, together with the 31 Colleges.

The University is renowned for its record of discovery and innovation. It is one of the great institutions, with a regional, national and global reach, attracting the very best and brightest minds. Our staff and students shape the world around us for the better: we attract and partner with like-minded people.

Whether contributing to the development of new anti-cancer drugs, adding to the understanding of how black holes are formed, revolutionising the study of ancient settlements, convening academic expertise to offer solutions to the climate crisis, or analysing public attitudes towards democracy around the world, the University's research is remarkable in its breadth, quality and impact. The University also sits at the heart of Europe's largest technology cluster and has catalysed more than 1,500 high-tech companies. And yet what inspires our 24,000 students and 13,000 staff is not what has already been achieved, but what is possible in the future.

The education and experience of our students, based on a partnership between the University's academic Departments and Faculties and the 31 Colleges, is second to none. Every student is a member of one of the Colleges, each a community of students, academics and staff drawn from across the University's comprehensive range of subject areas.



The University is a self-governing community, with a system for decision-making that provides a high degree of accountability and transparency to its members. Each Department and Faculty is part of one of six academic Schools, but each of them, and each individual academic, has a great deal of autonomy. The Colleges are independent and self-governing, working in a symbiotic relationship with the University.

The University has a number of Institutions that are independent of any Faculty or Department and are not part of the academic Schools. These include the Institute of Continuing Education (which provides high-quality education to adults throughout their lives), the Fitzwilliam Museum, Kettle's Yard (an historic house and gallery that holds important collections of modern art) and the University Library. In addition to their diverse contributions to University and public life, these non-School Institutions are also important centres of teaching and research.

Cambridge University Press & Assessment provides academic publishing, examinations and learning materials worldwide, supporting the dissemination of research, academic development at school and in higher education, and international student mobility. Legally, the Press & Assessment is a department of the University. It provides very important funds to invest in the academic purposes of the University.

The University has made truly remarkable contributions to the sum of human understanding, with breakthrough ideas and discoveries that have changed the way we understand ourselves, our planet, and the universe around us. Yet the global and national contexts in which it operates are fast-changing and increasingly filled with uncertainty. In a world that is becoming - politically, economically, socially, and technologically – ever more interconnected but even less equal, the University's mission – “to contribute to society through the pursuit of education, learning and



About Us

The University is one of the world's leading academic centres. It comprises 150 faculties and departments, together with a central administration and other institutions. Our institutions, museums and collections are a world-class resource for researchers, students and members of the public representing one of the country's highest concentrations of internationally important collections.

The University has an annual income of £2 billion. Research income, won competitively from the UK Research Councils, the European Union (EU), major charities and industry, exceeds £500 million per annum and continues to grow.

The Colleges and the University remain committed to admitting the best students regardless of their background and to investing considerable resources both in widening access and financial support. The 31 Colleges are self-governing, separate legal entities which appoint their own staff. Many academic staff are invited to join a College as a Teaching Fellow, which provides a further social and intellectual dimension. The Colleges admit undergraduate students, provide student accommodation and pastoral support and deliver small group teaching for undergraduates.

The University awards degrees and its faculties and departments provide lectures and seminars for students and determine the syllabi for teaching.

Our instinct for seeking out excellence and setting up enduring and mutually beneficial collaborations has led us to establish strategic partnerships across the globe. Whether it is the successful Cambridge-Africa Programme involving universities in Ghana, Uganda and elsewhere on the African continent; or the close association with the government of India to pursue new research in crop science; or the creation, with Germany's Max Planck Institutes, of a Cambridge-based centre for the study of ethics, human economy and social change – international partnerships are now an inextricable part of the University's make-up.

"Through its outstanding education, research and innovation, the University of Cambridge has made - and continues to make - a lasting contribution to human knowledge and is flourishing. By working at the University of Cambridge, you will be joining a vibrant community of students, scholars and professional services staff, committed to supporting and enhancing the University's mission to contribute to society."

Professor Deborah Prentice,
Vice Chancellor, 2023



Working at the University

Working at Cambridge you will join a diverse, talented and innovative community, with more than 24,000 students and over 13,000 staff from all walks of life and corners of the world.

The University continually explores strategies to attract and retain the best people. It is committed to supporting its staff to achieve their best. We are a fair, diverse and inclusive society and we believe our staff are our greatest asset. There is strong commitment to developing institutional leadership and supporting and encouraging staff development at all levels.

We offer a variety of roles including academic, research, professional, managerial and support roles. We also offer extensive benefits and excellent learning opportunities within a stimulating working environment.

Equality & diversity

The University has built its excellence on the diversity of its staff and student community. We aim to be a leader in fostering equality and inclusion, and in promoting respect and a sense of belonging for all. We encourage applications from all sections of society. All appointments are made on the basis of merit. We have an Equal Opportunities Policy, along with a range of diversity groups, including the Women's Staff Network, Race Equality Network and LGBT+ Staff Network. More details are available here: <http://www.equality.admin.cam.ac.uk/>

The University's estate is undergoing the most significant transformation in its history.

Cambridge has been able to create a new science and technology campus to the west of the city centre, and is now expanding further to the north west of Cambridge including investing in affordable homes for University key workers and community facilities. Even with our continued development, the University remains within walking or cycling distance across the campus. The University is a major partner on the Cambridge Biomedical Campus and we continue to redevelop our historic city centre sites demonstrating our determination to ensure that we can offer the best facilities and opportunities for our staff and students.



The University has a bronze Race Equality Charter award, with a framework for improving the representation, progression and success of minority ethnic staff and students within higher education. Furthermore, the University's silver Athena swan award recognises and celebrates good practice in recruiting, retaining and promoting gender equality.

Living in Cambridge

Cambridge is rich in cultural diversity. From beautiful University and College buildings, museums and art galleries, quaint gardens and punts on the River Cam, to a vibrant restaurant and café scene, our employees are surrounded by the wonderful features of this unique city.

You can find a wide-range of high street shops and 3 shopping centres, with independent alternatives at the historic market and nestled within the passageways in the city centre. You will find a cinema, bowling alley, a nightclub and various live performances at the Cambridge Leisure Park, with further entertainment options at the Corn Exchange, Arts Theatre and the ADC Theatre. Further information can be found on the Visit Cambridge website.

If you prefer the faster pace of life, London is a 45-minute train journey away. For those travelling from overseas, Stansted Airport is just 45 minutes away and Heathrow Airport under 2 hours away. The University is a short distance from a host of other attractions such as Ely Cathedral, Newmarket Races and various wildlife parks and stately homes. Cambridge is also within easy reach of the beautiful Broads and coastlines of Norfolk and Suffolk.

Relocation Support

The University recognises the importance of helping individuals to move and settle into a new area. We provide support and guidance to those relocating internationally or domestically to take up a post at the University of Cambridge, liaising with other University offices and selected partners to ensure comprehensive relocation support is available. This includes: accommodation, childcare, schools, banking, immigration and transport. If you would like further information, please visit <https://www.accommodation.cam.ac.uk/RelocationService/>. The Shared Equity Scheme and the Reimbursement of Relocation Expenses Scheme provide financial assistance to qualifying new members of staff with the costs of relocating to Cambridge.

Accommodation Service

The University Accommodation Service helps staff, students and visiting scholars who are affiliated to the University in their search for suitable accommodation in Cambridge. The dedicated accommodation team can provide access to a wide range of University-owned furnished and unfurnished properties, and has a database of private sector accommodation available for short and long-term lets. For further information and to register with this free service please visit: <https://www.accommodation.cam.ac.uk/>



What Cambridge can offer

We offer a comprehensive reward package to attract, motivate and retain high performing staff at all levels and in all areas of work.

The University offers a wide range of competitive benefits, from family leave entitlement, to shopping and travel discount schemes. Our generous annual leave package contributes to the positive wellbeing of our University employees. Sabbatical leave enables academics to focus on research and scholarship, whilst still maintaining their full salary. The University also has a career break scheme for academic and academic-related staff, with additional flexible working policies for all other staff.

Pay and benefits

The University salary structure includes automatic service-related pay progression in many of its grades and an annual cost of living increase. In addition to this, employees are rewarded for outstanding contribution through a number of regular pay progression schemes. The University offers attractive pensions schemes for employees, with an additional benefit of a salary exchange arrangement providing tax and national insurance savings.



CAMbens employee benefits

The University offers employees a wide range of competitive benefits, known as CAMbens. CAMbens offers something for everyone across a range of categories, including:

- Financial Benefits, including shopping discounts (both local and national) and a Payroll Giving scheme;
- Relocation and Accommodation Benefits, including relocation assistance and interest-free Rental Deposit Loans;
- Travel Benefits, including Cycle to Work, discounts on train season tickets and interest-free Travel to Work loans;
- Family Friendly and Lifestyle Benefits, including support with childcare and family friendly policies;
- Health and Wellbeing Benefits, including a University Staff Counselling Service, discounts at the University Sports Centre, and other local gyms, and healthcare schemes.



What Cambridge can offer

Family-friendly policies

The University recognises the importance of supporting its staff. We have a range of family-friendly policies to aid employees' work-life balance including a generous maternity, adoption and shared parental leave entitlement of 26 weeks' full pay, and paid emergency leave for parents and carers.

Other family-friendly support includes:

Our highly regarded workplace nurseries, a childcare salary exchange scheme and a high-quality holiday Playscheme are available to help support University employees with caring responsibilities (subject to demand and qualifying criteria). Further childcare information can be found here: <https://www.childcare.admin.cam.ac.uk/>

The Newcomers and Visiting Scholars Group (<https://www.nvs.admin.cam.ac.uk/>) is an organisation within the University that welcomes the partners and families of visiting scholars and new members of the University. Run by volunteers, the group offers opportunities to visit interesting Cambridge venues, learn about the community, take part in social events and gain local knowledge while developing a strong support network of both residents and other newcomers.

Your wellbeing

The University's Sport Centre, Counselling Services and Occupational Health are just some of the support services available to University employees to promote their physical and mental wellbeing. The University delivers The Festival of Wellbeing annually, which is a programme of stimulating talks and activities, which aim to promote wellbeing and good mental and physical health. The University also hosts the Cambridge Festival, which is a great opportunity to get your first taste of public engagement, through volunteering, supporting hands-on activities or proposing a talk.

Development opportunities

We support new employees to settle in through various activities as well as supporting their professional and career development on an ongoing basis. Our Personal and Professional Development (PPD) team provide development opportunities for all University employees, including face-to-face sessions, online learning modules and webinars. All employees also have unlimited access to LinkedIn Learning to support their development. Both new and existing employees can undertake funded Apprenticeships, which lead to a range of vocational and professional qualifications. We offer reduced staff fees for University of Cambridge graduate courses and the opportunity to attend lectures and seminars held by University departments and institutions. A range of University training providers also offer specialist learning and development in their own areas e.g. teaching and learning, digital literacy, finance, health and wellbeing, safety.



How to Apply

Applications should be submitted online via the University of Cambridge jobs page www.jobs.cam.ac.uk by clicking “Apply online” in the job advert. You will need an email address to register for our online system.

Conversations about flexible working are encouraged at the University of Cambridge. Please feel free to discuss flexibility prior to applying (using the contact information below) or at interview if your application is successful.

The closing date for applications is midnight (BST) on Thursday 7th August 2025. We anticipate that interviews will be held on site on Wed 20 August, subject to change.

Informal enquiries about the role are always welcome. Please email yearabroad@mml.cam.ac.uk if you would like to find out more about the role. If you have any questions about the application process, please contact our HR Team on MMLLPersonnel@admin.cam.ac.uk.

Please quote reference GP46391 on your application and in any correspondence about this vacancy.

