



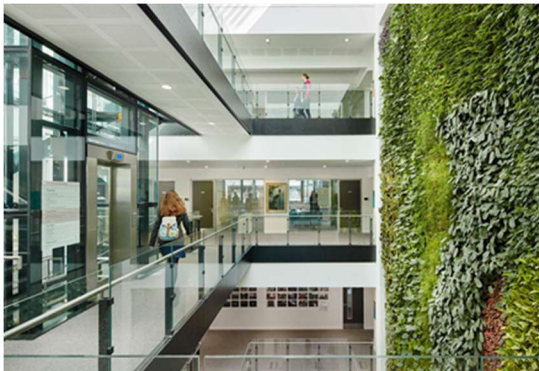
UNIVERSITY OF  
CAMBRIDGE

# Research Associates in Cleantech & Industrial Policy in Europe

Department of Land Economy

Closing Date: 30 May 2025

Job Reference: JP45811



# Research Associates in Cleantech & Industrial Policy in Europe

**Salary:**

£37,174 - £45,413 per annum

**Contract:**

Fixed Term with an end date of 31 December 2027

**Location:**

Cambridge

**Faculty / Department:**

Centre for Environment, Energy and Natural Resource Governance (CEENRG), Department of Land Economy

**Responsible to:**

Professor Laura Diaz Anadon

**Working Pattern:**

Full Time

The University of Cambridge has a Hybrid Working Policy that aims to enable as many staff as possible to work in a hybrid way if they so wish, whilst recognising that some roles will include tasks that can only be performed on University premises.

**Purpose of the role**

Two Research Associates in Cleantech and Industrial Policy in Europe will work on a research project, joint with UC Berkeley entitled “Designing Institutions for Commercialising Clean Energy Technologies”. The Research Associates will focus on public institutions for supporting the demonstration, commercialization, and early deployment of clean energy technologies in Europe. They will work under the supervision of Principal Investigator in Cambridge, Professor Laura Diaz-Anadon

<https://www.landecon.cam.ac.uk/directory/professor-laura-diaz-anadon>

alongside other researchers at the Centre for Environment, Energy and Natural Resource Governance (CEENRG)

<https://www.landecon.cam.ac.uk/c-eenrg> at the Department of Land Economy at the University of Cambridge. The Research Associates will also collaborate with the project co-Principal Investigator Prof. Jonas Meckling at the University of California Berkeley, and his team.

**Key responsibilities**

The Research Associates will work in CEENRG and its ecosystem in Cambridge (including the Conservation Research Institute) and beyond to shed light on the functions played by some of the understudied cleantech industrial policy instruments and their firm level commercialisation outcomes with a focus on Europe. Their research will involve gathering and analysing large amounts of new data using new computational techniques and data sources. The research conducted by the Research Associates will benefit from being in CEENRG, a major interdisciplinary research centre with a critical mass of researchers in this research area of cleantech, industrial policy and policy evaluation.

The project is funded by a donation of the Quadrature Climate Foundation (QCF) and is motivated by the fact that emerging clean energy technologies must be commercialised at a much faster pace than their predecessors. This raises the question of how public institutions can most effectively facilitate the commercialisation of emerging clean energy technologies by supporting demonstration, manufacturing, and early deployment. While research has shown that government institutions contribute to innovation outcomes, most of this work, including our own, mainly focuses on R&D-focused agencies.



## Key responsibilities continued

In contrast, we know little about which institutions most effectively help commercialise new technologies to decarbonise energy systems.

At the same time, in the recent turn towards green industrial policy, governments have created various institutions focused specifically on energy technology commercialisation. Policymakers are thus ‘flying blind’ by spending extensive effort on institution-building to address a grand challenge without knowing much about whether these institutions will be effective. This makes understanding effective institutional design an urgent and important research goal.

Researchers in the project will examine institutions focused on the commercialisation of clean energy technologies in the European Union, Germany, and the UK and the functions they perform in technology commercialisation. The project plans to study, both quantitatively and qualitatively, whether different institutions and specific institutional characteristics are associated with variation in the commercialisation of clean energy technologies.

Researchers in Cambridge will focus primarily on the quantitative aspects of the project and successful candidates will need to demonstrate ability and experience with statistical and quantitative data analysis, particularly at the firm level, machine learning methods for analysing text and extracting and classifying material, and visualization methods.

The positions are full-time and fixed-term until 31 December 2027, with a 6-month probationary period.

Candidates should have a PhD (submitted or nearly submitted at the time of application) in a field relevant to the interface of energy technology, economics, data science and public policy. Examples of relevant disciplines include (but are not limited to):

- any physical, mathematical, computer or engineering science, with knowledge and/or some experience of energy technology and policy; and/or
- quantitative analysis including econometrics, statistics and machine learning and related disciplines handling large amounts of complex data.

They should provide evidence of potential for research and publication at the highest level, as well as a strong interest in engagement in empirically-grounded, quantitative, and multi-disciplinary research. They should also have excellent communication skills and demonstrate interest and experience working with stakeholders including other researchers, policy makers, entrepreneurs, and the NGO and business communities.

# Declaration on Research Assessment

The University of Cambridge is a signatory to the San-Francisco Declaration on Research Assessment (DORA), and in recruitment or promotion evaluations will assess research on the basis of its merits rather than the journal or venue in which it is published. Applicants should not include Journal Impact Factors or uncontextualized metrics in their applications. Full details are at: <https://www.research-strategy.admin.cam.ac.uk/research-policy/DORA>

# Person Specification

| Criteria   | Essential | Desirable |
|--|-----------|-----------|
| <b>Education</b>   |           |           |
| PhD (submitted or nearly submitted at the time of application) in a field relevant to the interface of energy, technology, economics, and public policy.   | ✓         |           |
| <b>Specialist Knowledge and Skills</b>   |           |           |
| Demonstrated ability to conduct research (formulating, structuring, conducting, contextualizing, presenting outputs), and/or equivalent contributions to advancing knowledge within professional practice, relevant to the interface of energy technologies, economics, and public policy. | ✓         |           |
| Demonstrated potential (via publications, conference presentations, grants, and/or other projects, activities or recognitions) to develop independent research at the intersection of energy technologies, economics and public policy.  | ✓         |           |
| Demonstrated ability to collect, manage and analyse quantitative and qualitative data with appropriate software.   | ✓         |           |
| Excellent analytical skills.   | ✓         |           |
| Either demonstrated knowledge in or demonstrated ability to learn about program evaluation and econometric techniques.   | ✓         |           |
| <b>Interpersonal and Communication Skills</b>  |           |           |
| Excellent interpersonal, oral and written communication skills, necessary to interact with other researchers and various stakeholders in the public, private and not-for profit sectors.   | ✓         |           |
| Relationship-building and ambassadorial skills for engaging diverse external audiences and stakeholders.   | ✓         |           |
| <b>Relevant Experience</b>   |           |           |
| Demonstrated interest in and ability to work collaboratively in highly interdisciplinary and intercultural teams and environments.   | ✓         |           |
| Experience working in an interdisciplinary research environment and/or in collaborating with colleagues from considerably different disciplines.   | ✓         |           |
| Experience organising events or conferences that creatively convene academic, practitioner and policy audiences, particularly at the international level.  |           | ✓         |



# Department of Land Economy



**The Department of Land Economy is a leading international centre, providing a full programme of taught courses within an intensive, research-oriented environment. In the 2022 Research Excellence Framework assessment, the Department came out on top, with 67% of the Department's research work described as "World Leading" and a further 31% "Internationally Excellent".**

## About the Department

The Department currently has over 40 teaching and research staff and approximately 320 students. We have a three-year undergraduate course and a postgraduate programme that offers both instructional and research-based MPhils, two MSt, as well as a three-year PhD. Research within the Department falls into one of our two research groups, namely Real Estate and Urban Analysis and Environmental Economy and Policy.

The Department addresses contemporary problems as well as more fundamental analysis. This includes both the role of governments in establishing regulatory frameworks within which land and related markets operate and the role of private organisations in owning, managing and developing physical and financial assets within those markets. This combination gives the Department of Land Economy a unique and valuable perspective of critical public and private issues.

As a department, we actively encourage staff and students to go about their duties in a resource-efficient way and minimise impacts to the environment wherever possible.

## Key information

Land Economy, as a subject, considers the role and use of land, real estate and environment within an economy. It applies particularly the disciplines of economics, law and planning for the analysis of the governance of land use, urban areas, and interactions with other environmental resources.

# The School of Humanities and Social Sciences

**The School of the Humanities & Social Sciences is a diverse community of academics, students and staff from across all of our related subjects. Cambridge's reputation for excellence rests upon our outstanding teaching and our world-class research. The Institutions of the School support scholars who are leading authorities in their fields, and are home to innovative and collaborative research projects which continue to push the boundaries of our knowledge and refine how we think and see the world.**

## About the School

The six Schools of the University are administrative groupings of related subjects. The Council of each School acts as a coordinating organisation for the group, managing and prioritising requests from Faculties and Departments for consideration by the General Board.

The following institutions are within the scope of the Council of the School of the Humanities and Social Sciences:

- Faculty of Economics
- Faculty of Education

- Faculty of History
- Faculty of Law
- Department of Archaeology
- Department of History & Philosophy of Science.
- Department of Land Economy
- Department of Politics and International Studies.
- Department of Social Anthropology
- Department of Sociology
- The Institute of Criminology

The School's total annual expenditure from grants, fees, research grants and contracts and other sources is about £65m. The institutions in the School employ about 1000 staff (academic, assistant and contract). The School has more than 5,000 students, undergraduates and postgraduates, over a quarter of the University's total student population. The post holder will be an integral member of the School Office team.

The Council of the School is chaired by the Head of School, fulfilled by an appointment of a senior academic and supported by a Deputy Head with an education portfolio. The School Office is currently based at 17 Mill Lane, in central Cambridge.



# Terms of Appointment

## Tenure and probation

Appointments will be made on a fixed-term basis with an end date of 31 December 2027, due to limited funding. Appointments will be subject to satisfactory completion of a six-month probationary period.

## Hours of Work and Working Pattern

The hours of work for the position are 37 hours per week, working Monday – Friday.

## Pension

You will automatically be enrolled to become a member of USS (Universities Superannuation Scheme) – a hybrid pension scheme. For further information please visit: <https://www.pensions.admin.cam.ac.uk/>

## Annual leave

Full time employees are entitled to annual paid leave of 41 days inclusive of public holidays. For new part-time employees, annual leave will be pro rata'd based on days worked.

## General information

### Pre-employment checks

### Right to work in the UK

We have a legal responsibility to ensure that you have the right to work in the UK before you can start working for us.

If you do not have the right to work in the UK already, any offer

of employment we make to you will be conditional upon you gaining it.

**Health declaration:** Once an offer of employment has been made the successful candidate will be required to complete a work health declaration form.

**Qualifications:** The person specification for this position lists qualifications that are essential and/or desirable. Please note that if you are offered the post you will be asked to provide your relevant original certificates of these qualifications.

**References:** Offers of appointment will be subject to the receipt of satisfactory references.

## Equality and Diversity

We particularly encourage women and /or candidates from a Black, Asian and Minority Ethnic background to apply for this vacancy as they are currently under-represented at this level within our University.

### Information if you have a disability

The University welcomes applications from individuals with disabilities. We are committed to ensuring fair treatment throughout the recruitment process. We will

make adjustments to enable applicants to compete to the best of their ability wherever it is reasonable to do so and, if successful, to assist them during their employment.

Information for disabled applicants is available at <https://www.admin.cam.ac.uk/offices/hr/staff/disabled/>

We encourage you to declare any disability that you may have, and any reasonable adjustments that you may require, in the section provided for this purpose in the application form. This will enable us to accommodate your needs throughout the process as required. However, applicants and employees may declare a disability at any time.

If you prefer to discuss any special arrangements connected with a disability, please contact, the Department Administrator, who is responsible for recruitment to this position.



# The University

The University of Cambridge is consistently ranked one of the best universities in the world, achieving academic excellence through its Faculties, Departments and other Institutions, together with the 31 Colleges.

The University is renowned for its record of discovery and innovation. It is one of the great institutions, with a regional, national and global reach, attracting the very best and brightest minds. Our staff and students shape the world around us for the better: we attract and partner with like-minded people.

Whether contributing to the development of new anti-cancer drugs, adding to the understanding of how black holes are formed, revolutionising the study of ancient settlements, convening academic expertise to offer solutions to the climate crisis, or analysing public attitudes towards democracy around the world, the University's research is remarkable in its breadth, quality and impact. The University also sits at the heart of Europe's largest technology cluster and has catalysed more than 1,500 high-tech companies. And yet what inspires our 24,000 students and 13,000 staff is not what has already been achieved, but what is possible in the future.

The education and experience of our students, based on a partnership between the University's academic Departments and Faculties and the 31 Colleges, is second to none. Every student is a member of one of the Colleges, each a community of students, academics and staff drawn from across the University's comprehensive range of subject areas.





The University is a self-governing community, with a system for decision-making that provides a high degree of accountability and transparency to its members. Each Department and Faculty is part of one of six academic Schools, but each of them, and each individual academic, has a great deal of autonomy. The Colleges are independent and self-governing, working in a symbiotic relationship with the University.

The University has a number of Institutions that are independent of any Faculty or Department and are not part of the academic Schools. These include the Institute of Continuing Education (which provides high-quality education to adults throughout their lives), the Fitzwilliam Museum, Kettle's Yard (an historic house and gallery that holds important collections of modern art) and the University Library. In addition to their diverse contributions to University and public life, these non-School Institutions are also important centres of teaching and research.

Cambridge University Press & Assessment provides academic publishing, examinations and learning materials worldwide, supporting the dissemination of research, academic development at school and in higher education, and international student mobility. Legally, the Press & Assessment is a department of the University. It provides very important funds to invest in the academic purposes of the University.

The University has made truly remarkable contributions to the sum of human understanding, with breakthrough ideas and discoveries that have changed the way we understand ourselves, our planet, and the universe around us. Yet the global and national contexts in which it operates are fast-changing and increasingly filled with uncertainty. In a world that is becoming - politically, economically, socially, and technologically – ever more interconnected but even less equal, the University's mission – “to contribute to society through the pursuit of education, learning and research at the highest international levels of excellence” – has never been more relevant.



# About Us

**The University is one of the world's leading academic centres. It comprises 150 faculties and departments, together with a central administration and other institutions. Our institutions, museums and collections are a world-class resource for researchers, students and members of the public representing one of the country's highest concentrations of internationally important collections.**

The University has an annual income of £2 billion. Research income, won competitively from the UK Research Councils, the European Union (EU), major charities and industry, exceeds £500 million per annum and continues to grow.

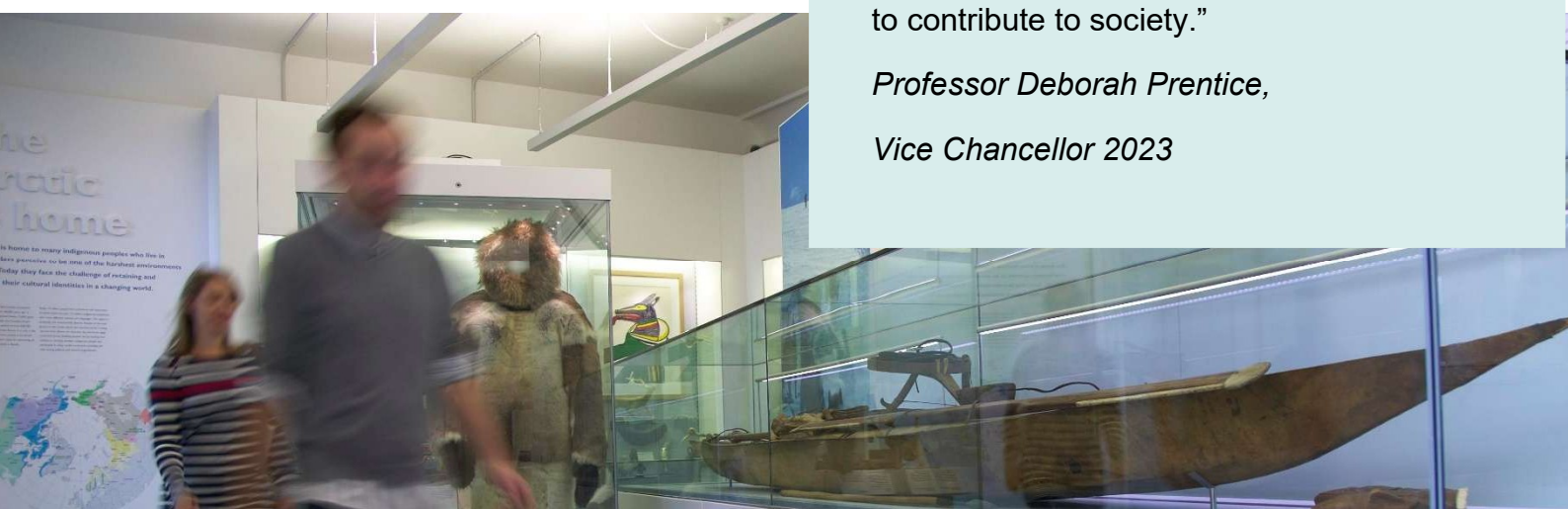
The Colleges and the University remain committed to admitting the best students regardless of their background and to investing considerable resources both in widening access and financial support. The 31 Colleges are self-governing, separate legal entities which appoint their own staff. Many academic staff are invited to join a College as a Teaching Fellow, which provides a further social and intellectual dimension. The Colleges admit undergraduate students, provide student accommodation and pastoral support and deliver small group teaching for undergraduates.

The University awards degrees and its faculties and departments provide lectures and seminars for students and determine the syllabi for teaching.

Our instinct for seeking out excellence and setting up enduring and mutually beneficial collaborations has led us to establish strategic partnerships across the globe. Whether it is the successful Cambridge-Africa Programme involving universities in Ghana, Uganda and elsewhere on the African continent; or the close association with the government of India to pursue new research in crop science; or the creation, with Germany's Max Planck Institutes, of a Cambridge-based centre for the study of ethics, human economy and social change – international partnerships are now an inextricable part of the University's make-up.

“Through its outstanding education, research and innovation, the University of Cambridge has made – and continues to make – a lasting contribution to human knowledge and is flourishing. By working at the University of Cambridge, you will be joining a vibrant community of students, scholars and professional services staff committed to supporting and enhancing the University's mission to contribute to society.”

*Professor Deborah Prentice,  
Vice Chancellor 2023*





# Working at the University

**Working at Cambridge you will join a diverse, talented and innovative community, with more than 24,000 students and over 13,000 staff from all walks of life and corners of the world.**

The University continually explores strategies to attract and retain the best people. It is committed to supporting its staff to achieve their best. We are a fair, diverse and inclusive society and we believe our staff are our greatest asset. There is strong commitment to developing institutional leadership and supporting and encouraging staff development at all levels.

The University offers a variety of roles including academic, research, professional, managerial and support roles. We also offer extensive benefits and excellent learning opportunities within a stimulating working environment.

The University's estate is undergoing the most significant transformation in its history. Cambridge has been able to create a science and technology campus to the west of the city centre, and is expanding further to the north west of Cambridge including investing in affordable homes for University key workers and community facilities. Even with their continued development, the University remains within walking or cycling distance across the campus. The University is a major partner on the Cambridge Biomedical Campus and continues to redevelop its historic city centre sites demonstrating a clear determination to ensure that we can offer the best facilities and opportunities for our staff and students.



## Equality, Diversity and Inclusion

The University has built its excellence on the diversity of its staff and student community. We aim to be a leader in fostering equality and inclusion, and in promoting respect and a sense of belonging for all. We encourage applications from all sections of society. All appointments are made on the basis of merit. We have an Equal Opportunities Policy, along with a range of diversity groups, including the Women's Staff Network, Race Equality Network and LGBT+ Staff Network. More details are available here:

<http://www.equality.admin.cam.ac.uk/>

The University has a bronze Race Equality Charter award, with a framework for improving the representation, progression and success of minority ethnic staff and students within higher education. Furthermore, the University's silver Athena swan award recognises and celebrates good practice in recruiting, retaining and promoting gender equality.

# Living in Cambridge

Cambridge is rich in cultural diversity. From beautiful University and College buildings, museums and art galleries, quaint gardens and punts on the River Cam, to a vibrant restaurant and café scene, our employees are surrounded by the wonderful features of this unique city.

You can find a wide-range of high street shops and 3 shopping centres, with independent alternatives at the historic market and nestled within the passageways in the city centre. You will find a cinema, bowling alley, a nightclub and various live performances at the Cambridge Leisure Park, with further entertainment options at the Corn Exchange, Arts Theatre and the ADC Theatre. Further information can be found on the Visit Cambridge website.

If you prefer the faster pace of life, London is a 45-minute train journey away. For those travelling from overseas, Stansted Airport is just 45 minutes away and Heathrow Airport under 2 hours away. The University is a short distance from a host of other attractions such as Ely Cathedral, Newmarket Races and various wildlife parks and stately homes. Cambridge is also within easy reach of the beautiful Broads and coastlines of Norfolk and Suffolk.

## Relocation Support

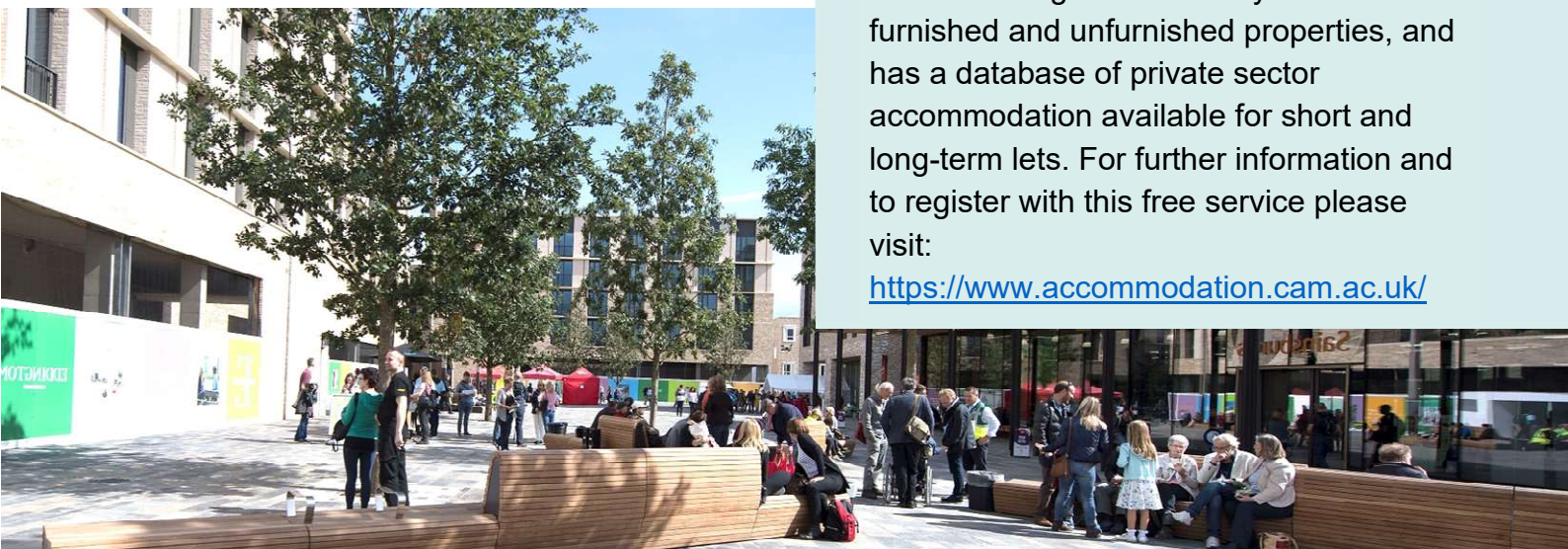
The University recognises the importance of helping individuals to move and settle into a new area. We provide support and guidance to those relocating internationally or domestically to take up a post at the University of Cambridge, liaising with other University offices and selected partners to ensure comprehensive relocation support is available. This includes: accommodation, childcare, schools, banking, immigration and transport. If you would like further information, please visit

<https://www.accommodation.cam.ac.uk/RelocationService/>. The Shared Equity Scheme and the Reimbursement of Relocation Expenses Scheme provide financial assistance to qualifying new members of staff with the costs of relocating to Cambridge.

## Accommodation Service

The University Accommodation Service helps staff, students and visiting scholars who are affiliated to the University in their search for suitable accommodation in Cambridge. The dedicated accommodation team can provide access to a wide range of University-owned furnished and unfurnished properties, and has a database of private sector accommodation available for short and long-term lets. For further information and to register with this free service please visit:

<https://www.accommodation.cam.ac.uk/>





# What Cambridge can offer

**We offer a comprehensive reward package to attract, motivate and retain high performing staff at all levels and in all areas of work.**

The University offers a wide range of competitive benefits, from family leave entitlement, to shopping and travel discount schemes. Our generous annual leave package contributes to the positive wellbeing of our University employees. Sabbatical leave enables academics to focus on research and scholarship, whilst still maintaining their full salary. The University also has a [career break scheme](#) for academic and academic-related staff, with additional flexible working policies for all other staff.



## Pay and benefits

The University salary structure includes automatic service-related pay progression in many of its grades and an annual cost of living increase. In addition to this, employees are rewarded for outstanding contribution through a number of regular pay progression schemes. The University offers attractive pensions schemes for employees, with an additional benefit of a salary exchange arrangement providing tax and national insurance savings.

## CAMbens employee benefits

The University offers employees a wide range of competitive benefits, known as CAMbens. CAMbens offers something for everyone across a range of categories, including:

- Financial Benefits, including shopping discounts (both local and national) and a Payroll Giving scheme;
- Relocation and Accommodation Benefits, including relocation assistance and interest-free Rental Deposit Loans;
- Travel Benefits, including Cycle to Work, discounts on train season tickets and interest-free Travel to Work loans;
- Family Friendly and Lifestyle Benefits, including support with childcare and family friendly policies;
- Health and Wellbeing Benefits, including a University Staff Counselling Service, discounts at the University Sports Centre, and other local gyms, and healthcare schemes.



# What Cambridge can offer

## Family-friendly policies

The University recognises the importance of supporting its staff. We have a range of family-friendly policies to aid employees' work-life balance including a generous maternity, adoption and shared parental leave entitlement of 26 weeks' full pay, and paid emergency leave for parents and carers.

Other family-friendly support includes:

Our highly regarded workplace nurseries, a childcare salary exchange scheme and a high-quality holiday Playscheme are available to help support University employees with caring responsibilities (subject to demand and qualifying criteria). Further childcare information can be found here:

<https://www.childcare.admin.cam.ac.uk/>

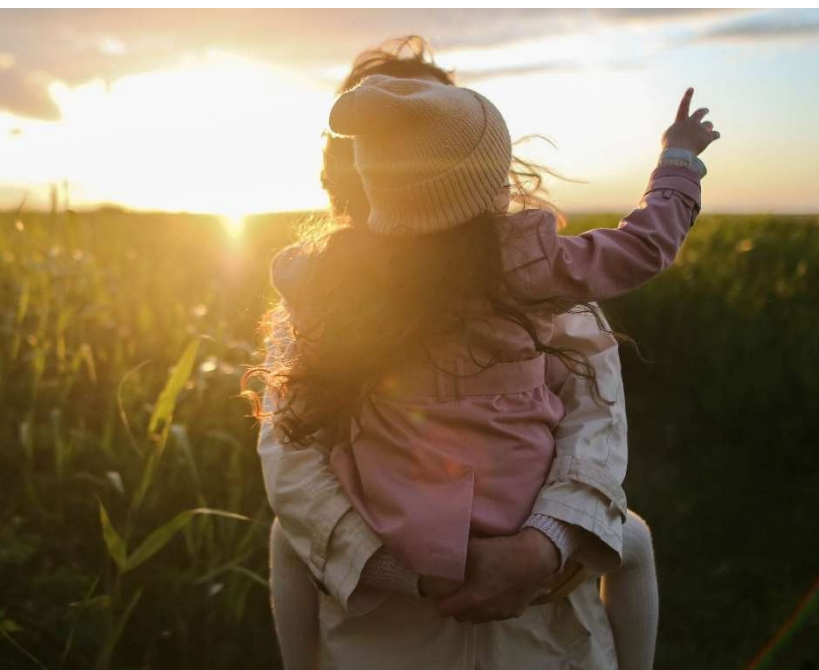
The Newcomers and Visiting Scholars Group (<https://www.nvs.admin.cam.ac.uk/>) is an organisation within the University that welcomes the partners and families of visiting scholars and new members of the University. Run by volunteers, the group offers opportunities to visit interesting Cambridge venues, learn about the community, take part in social events and gain local knowledge while developing a strong support network of both residents and other newcomers.

## Your wellbeing

The University's Sport Centre, Counselling Services and Occupational Health are just some of the support services available to University employees to promote their physical and mental wellbeing. The University delivers The Festival of Wellbeing annually, which is a programme of stimulating talks and activities, which aim to promote wellbeing and good mental and physical health. The University also hosts the [Cambridge Festival](#), which is a great opportunity to get your first taste of public engagement, through volunteering, supporting hands-on activities or proposing a talk.

## Development opportunities

We support new employees to settle in through various activities as well as supporting their professional and career development on an ongoing basis. Our Personal and Professional Development (PPD) team provide development opportunities for all University employees, including face-to-face sessions, online learning modules and webinars. All employees also have unlimited access to LinkedIn Learning to support their development. Both new and existing employees can undertake funded Apprenticeships, which lead to a range of vocational and professional qualifications. We offer reduced staff fees for University of Cambridge graduate courses and the opportunity to attend lectures and seminars held by University departments and institutions. A range of University training providers also offer specialist learning and development in their own areas e.g. teaching and learning, digital literacy, finance, health and wellbeing, safety.





# How to apply

Applications should be submitted online via the University of Cambridge jobs page [www.jobs.cam.ac.uk](http://www.jobs.cam.ac.uk) by clicking “Apply online” in the job advert. You will need an email address to register for our online system.

Please upload the following:

- a full Curriculum Vitae including a list of publications
- a cover letter including a statement of your research, your relevant work experience and qualifications, and in general how your profile fits the position using no more than 1,500 words
- the contact details of two referees

After shortlisting, where you have given permission, your nominated referees will be asked to provide a reference via the on-line system.

Informal enquiries are welcomed and should be directed to:

**Professor Laura Diaz Anadon** - Email: [lda24@cam.ac.uk](mailto:lda24@cam.ac.uk)

If you have any queries regarding the application process, please contact [hr@hsps.cam.ac.uk](mailto:hr@hsps.cam.ac.uk)

The closing date for applications is **30 May 2025**.

Interviews will be held soon after the closing date.

