

Project Buyer

Estates Division

Closing date: 2nd June 2024
Job Reference: XM41588



Project Buyer

Salary:

£40,521-£54,395 per annum

Staff Group:

Unestablished Academic Related

Contract:

Permanent

Location:

Cambridge

Department:

Estates Division

Working Pattern:

Full Time

Role overview

To lead on the development and delivery of procurement strategies utilising procurement best practice. The role holder will manage work streams across various departments within the category/s they manage. Support current requirements, design sell and implement solutions that reduce costs and risk.

Contribute to the Estate Management Strategy "Creating places for people who change the world", along with Team objectives.

The Estate Division's Procurement team has three main objectives as it manages in excess of £220m of addressable spend each year:

1. Leverage expenditure across the Estate to ensure optimal Value for Money is achieved
2. Enhance procurement best practice
3. Manage the supply chain risk/s

As role holder you will be able to demonstrate specified managerial and professional skills that allows flexibility to perform other duties appropriate to the grade of the post. The role holder will be fair and transparent in all processes ensuring we are audit ready.

Role purpose

The Estate Management Division is responsible for the design, construction and maintenance of the Estate valued at £4.9bn whilst the capital building programme is worth nearly £200m a year. Maintenance expenditure is over £20m p.a. Trading activities include the University Hub, Non Operational Estate, Catering Outlets and the University Farm

The role holder will be a highly adaptable Project buyer allocated to work within different parts of the division often cross functional according to the greatest areas of business need at any given time. They work with internal and external stakeholders to ensure all parties receive excellent service and drive tangible value for money.

- Manage the performance of contractors, consultants and suppliers on the EM managed list of via the EM framework agreement to ensure that University expectations are achieved.



- To lead on the development and dissemination of best practice procurement.
- Responsible for identifying, establishing, directing, leading and managing key areas of spend on procurement-related activity covering all aspects of the work of Estate Management.
- Devise, develop, promote and deliver procurement-led transformation programmes, strategic sourcing & cost reduction initiatives in order to achieve improved value for money for the University.
- Ensure competition between consultants and contractors in appropriate disciplines for each project; Assist in developing a comprehensive set of in-house processes to ensure fair and transparent selection and management of contractors and consultants that follow public contracts legislation.
- Develop and manage appropriate KPI's and benchmarks to measure performance
- Liaise with project managers and finance colleagues to ensure budgets are available for all procurement activity, thereby supporting the financial performance of Estates Division.
- Undertake special project work, ad-hoc reporting and analysis as required.
- Manage Procurement projects (>£10m) from initial sourcing stage to contract mobilisation.

Key Responsibilities

1. Lead on the development of Procurement Strategies and Gate A papers in line with University of Cambridge 7 steps of strategic sourcing
2. Lead on the drafting of tender documents using existing templates Prepare and agree tender documentation, including appropriate contractual precedents and evaluation models which enable best-value proposals to be identified.

Management of supplier communication following launch of tender, to ensure a fair and transparent process is delivered. Organise bid panels, site visits, evaluation meetings and supplier presentations

Oversee the opening of the tenders, management of bid evaluation to ensure technical expertise is captured and the wider implications of both the tender and each supplier are fully understood.

Recording and analysis of bids/tenders

Management of the negotiation process with the preferred supplier, draft contracts using existing templates, produce GATE A/B papers in line with governance

3. Responsible for identifying, establishing, directing, leading and managing key areas of spend on procurement-related activity covering all aspects of the work of Estates Division.
4. Recording and analysis of bids/tenders
5. Lead on and deliver high-value/high-risk tendering activities and act as a key point of expertise for internal customers and suppliers throughout the process. Communicate regulations and legislation to non-procurement specialists in a simple and concise manner to ensure compliance with Financial Regulations around competition in all tendering activities.
6. Use progress and performance data to inform decisions relating to contract extensions and retendering Report exceptions or concerns to the Senior Procurement Manager.
7. Lead on and manage contractual risk by confirming, clarifying and structuring the results of negotiations; drafting bespoke clauses within current contract templates, managing the resolution of any complex points of law with Legal Services and our external lawyers Mills & Reeve; liaising with suppliers in amending and agreeing contracts; and keeping accurate, up-to-date records of contracts and transactions. Ensure all purchasing complies with Financial Regulations.
8. Manage any dispensations that are requested and advise the Directors on the procurement and ensure head of departments sign off before presentation.
9. Devise, develop, promote and deliver procurement-led transformation programmes, strategic sourcing & cost reduction initiatives in order to achieve improved value for money for the University.

Person Specification

Criteria	Essential	Desirable
Experience		
Extensive Procurement experience gained within a Construction/FM environment.	✓	
Experience of modern Procurement techniques; Value for Money; Whole Life Costing;	✓	
Experience of building strong stakeholder relationships both internally with customers and externally with suppliers to enable the delivery of objectives	✓	
Experience of using e-tendering systems.	✓	
Experience of managing procurement projects >£10m	✓	
Skills		
The ability to initiate, plan, coordinate, execute and close down a project to meet the objectives and timescales	✓	
High level of literacy and numeracy	✓	
Strong analytical ability. Must be able to analyse data and create presentations.	✓	
Understanding of PCR2015	✓	
Qualifications		
Member of the Chartered Institute of Purchasing and Supply (CIPS) and qualified to level 4 or above with ethics module	✓	
Bachelor's degree or equivalent	✓	
Additional Requirements		
Innovative, Creative and Commercially/Financially astute; excellent communication, report writing; IT literate; honesty and integrity are paramount.		✓

Behavioural Attributes

This section summarises the behavioural attributes (or competencies) that we expect the role holder to be able to demonstrate, at what level and whether this is an essential or desirable requirement.

Full definitions are at: <https://www.hr.admin.cam.ac.uk/policies-procedures/behavioural-attributes>

Please review these and provide specific examples in your application of how you have demonstrated these attributes in your work, education or other experience. It will assist your application if you explain the situation, what you did and what the outcomes were.

Attribute	Level
Valuing Diversity	A
Achieving Results	B
Communication	B
Innovation and Change	B
Negotiating and Influencing	C
People Development	B
Relationship Building	B
Strategic Focus	B

Estates Division

The Estates Division at the University of Cambridge is a multi-disciplinary organisation responsible for the development, management and maintenance of the University estate, along with the provision of a variety of related services.

Our current operational estate (buildings used for teaching, research and administrative activities) is currently valued at £3 billion (Insurance Replacement Cost) and its broad and complex nature presents many demanding challenges, for example some buildings are 800 years old, Grade I Listed and protected by English Heritage, whilst others are new with highly sustainable building fabrics and buildings management systems.

Key areas we are responsible for include:

- Planning and managing the University's estate development programme.
- Project managing new build construction and the refurbishment/alteration of existing stock.
- Managing and maintaining the estate including residential accommodation and investment properties.
- Delivering a comprehensive facilities management service to the University.
- Managing catering outlets across the estate.
- Managing the operational and research facilities at the [University Farm](#).
- Promoting the University's environmental sustainability initiative, particularly with regard to reducing carbon emissions.



Terms of Appointment

Tenure and probation

The appointment will be made on a permanent basis. The appointment will be subject to satisfactory completion of a nine month probationary period.

Hours of Work and Working Pattern

There are no conditions relating to hours and times of work but you are expected to work such hours and days as are reasonably necessary for the proper performance of your duties. Your times of work should be agreed between you and your head of institution. Working pattern Monday to Friday.

Pension

You will automatically be enrolled to become a member of USS (Universities Superannuation Scheme) – a defined benefits pension scheme. For further information please visit: www.pensions.admin.cam.ac.uk/.

Annual leave

Full time employees are entitled to annual paid leave of 6.6 weeks (or 33 days for those working full time), plus public holidays. Pro rata for part time.

General information Pre-employment checks

Right to work in the UK

We have a legal responsibility to ensure that you have the right to work in the UK before you can start working for us. If you do not have the right to work in the UK already, any offer of employment we make to you will

be conditional upon you gaining it.

Health declaration

Once an offer of employment has been made the successful candidate will be required to complete a work health declaration form.

Qualifications

The person specification for this position lists qualifications that are essential and/or desirable. Please note that if you are offered the post you will be asked to provide your relevant original certificates of these qualifications.

References

Offers of appointment will be subject to the receipt of satisfactory references.

Screening Checks:

This role requires a basic disclosure check and a security check. Any offer of employment we make to you will be conditional upon the satisfactory completion of this/these check(s); whether an outcome is satisfactory will be determined by the University.

Information if you have a disability

The University welcomes applications from individuals with disabilities. We are committed to ensuring fair treatment throughout the recruitment process. We will make adjustments to enable applicants to compete to the best of their ability wherever it is reasonable to do so and, if successful, to assist them

during their employment.

Information for disabled applicants is available at <http://www.admin.cam.ac.uk/offices/hr/staff/disabled/>

We encourage you to declare any disability that you may have, and any reasonable adjustments that you may require, in the section provided for this purpose in the application form. This will enable us to accommodate your needs throughout the process as required. However, applicants and employees may declare a disability at any time.

If you prefer to discuss any special arrangements connected with a disability, please email Estates Division on EDR@admin.cam.ac.uk

The University

The University of Cambridge is one of the world's oldest and most successful universities. We are a renowned centre for research, education, and scholarship that makes a significant contribution to society. The University is consistently ranked amongst the top universities in the world. Our affiliates have won more Nobel Prizes than any other University.

Our sustained pursuit of academic excellence is built on a long history of first-class teaching and research within a distinctive collegiate system. For eight centuries our ideas and innovations have shaped the world. Our principal goal is to remain one of the world's leading universities in an increasingly competitive global higher education sector. Today the University of Cambridge is at the centre of a cluster of over 4,300 businesses employing 58,000 people.

Our capital investment projects include the West Cambridge site, the North West Cambridge development and the growth of the Biomedical Campus in the south of the city. The North West Cambridge development includes the opening of a primary school – the first in the UK to be managed by a University. So we are deeply embedded in, and committed to serving, our local community. These are all conspicuous signs of a University that is not only adapting to new needs, but also anticipating the future.

Our mission is to contribute to society through the pursuit of education, learning, and research at the highest international levels of excellence. Our core values are:

- freedom of thought and expression; and
- freedom from discrimination.



About Us

The University is one of the world's leading academic centres. It comprises 150 faculties and departments, together with a central administration and other institutions. Our institutions, museums and collections are a world-class resource for researchers, students and members of the public representing one of the country's highest concentrations of internationally important collections.

The University has an annual income of £2 billion. Research income, won competitively from the UK Research Councils, the European Union (EU), major charities and industry, exceeds £500 million per annum and continues to grow.

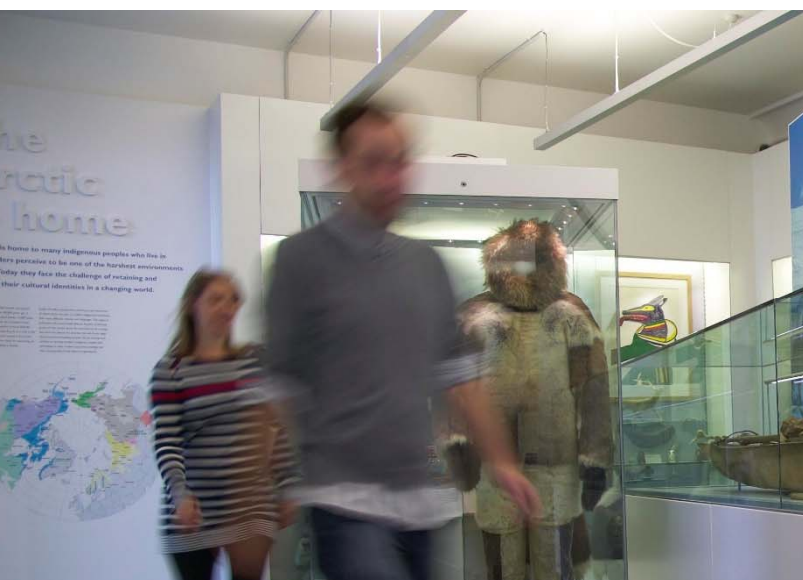
The Colleges and the University remain committed to admitting the best students regardless of their background and to investing considerable resources both in widening access and financial support. The 31 Colleges are self-governing, separate legal entities which appoint their own staff. Many academic staff are invited to join a College as a Teaching Fellow, which provides a further social and intellectual dimension. The Colleges admit students, provide student accommodation and deliver small group teaching.

The University awards degrees and its faculties and departments provide lectures and seminars for students and determine the syllabi for teaching and conducting research.

Our instinct for seeking out excellence and setting up enduring and mutually beneficial collaborations has led us to establish strategic partnerships across the globe. Whether it is the successful Cambridge-Africa Programme involving universities in Ghana, Uganda and elsewhere on the African continent; or the close association with the government of India to pursue new research in crop science; or the creation, with Germany's Max Planck Institutes, of a Cambridge-based centre for the study of ethics, human economy and social change – international partnerships are now an inextricable part of the University's make-up.

“Cambridge graduates and researchers have made – and continue to make – a colossal contribution to human knowledge and the understanding of the world around us. Their work touches on the lives and livelihoods of everyone from patients diagnosed with life-threatening diseases, to residents of areas critically affected by climate change, to children growing up in conflict zones. It has a lasting impact on our society, our economy and our culture: the world is truly a better place thanks to their efforts.”

Stephen Toope, Vice Chancellor 2019



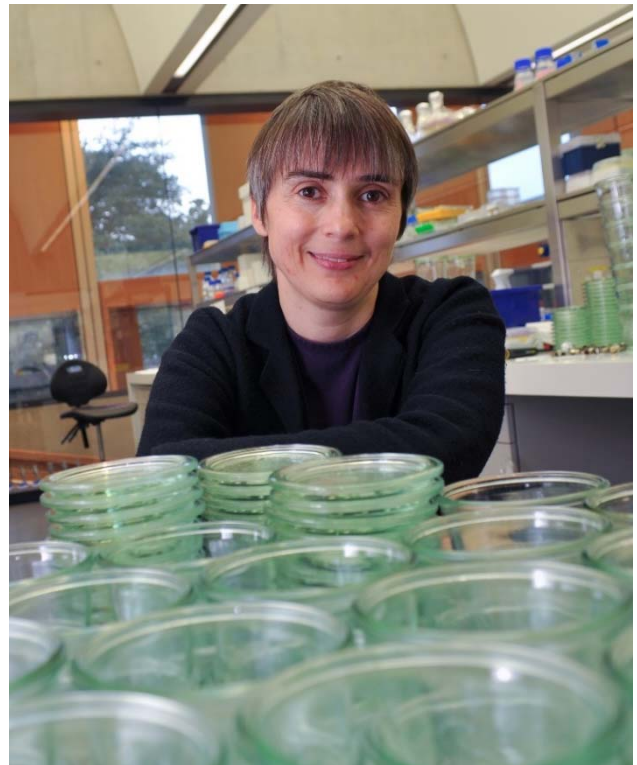
Working at the University

Working at Cambridge you will join a diverse, talented and innovative community, with more than 18,000 students and over 16,000 staff from all walks of life and corners of the world.

The University continually explores strategies to attract and retain the best people. It is committed to supporting its staff to achieve their best. We are a fair, diverse and inclusive society and we believe our staff are our greatest asset. There is strong commitment to developing institutional leadership and supporting and encouraging staff development at all levels.

We offer a variety of roles including academic, research, professional, managerial and support roles. We also offer extensive benefits and excellent learning opportunities within a stimulating working environment.

The University's estate is undergoing the most significant transformation in its history. Cambridge has been able to create a new science and technology campus to the west of the city centre, and is now expanding further to the north west of Cambridge including investing in affordable homes for University key workers and community facilities. Even with our continued development, the University remains within walking or cycling distance across the campus. The University is a major partner on the Cambridge Biomedical Campus and we continue to redevelop our historic city centre sites demonstrating our determination to ensure that we can offer the best facilities and opportunities for our staff and students.



Equality & diversity

The University has built its excellence on the diversity of its staff and student community. We aim to be a leader in fostering equality and inclusion, and in promoting respect and a sense of belonging for all. We encourage applications from all sections of society. All appointments are made on the basis of merit. We have an Equal Opportunities Policy, along with a range of diversity networks for women, black and minority ethnic and lesbian, gay, bisexual and transgender staff. More details are available here: <http://www.equality.admin.cam.ac.uk/>

The University has a bronze Race Equality Charter aware, with framework for improving the representation, progression and success of minority ethnic staff and students within higher education. Furthermore, the University's Athena SWAN award recognises and celebrates good practice in recruiting, retaining and promoting women.

Living in Cambridge

Cambridge is rich in cultural diversity. From beautiful University and College buildings, museums and art galleries, quaint gardens and punts on the River Cam, to a vibrant restaurant and café scene, our employees are surrounded by the wonderful features of this unique city.

You can find a wide-range of high street shops and 3 shopping centres, with independent alternatives at the historic market and nestled within the passageways in the city centre. You will find a cinema, bowling alley, a nightclub and various live performances At the Cambridge Leisure Park, with further entertainment options at the Corn Exchange, Arts Theatre and the ADC Theatre. Further information can be found on the Visit Cambridge website.

If you prefer the faster pace of life, London is a 45 minute train journey away. For those travelling from overseas, Stansted Airport is just 45 minutes away and Heathrow Airport under 2 hours away. The University is a short distance from a host of other attractions such as Ely Cathedral, Newmarket Races and various wildlife parks and stately homes. Cambridge is also within easy reach of the beautiful Broads and coastlines of Norfolk and Suffolk.

Relocation Support

The University recognises the importance of helping individuals to move and settle into a new area. We provide support and guidance to those relocating internationally or domestically to take up a post at the University of Cambridge, liaising with other University offices and selected partners to ensure comprehensive relocation support is available. This includes: accommodation, childcare, schools, banking, immigration and transport. If you would like further information, please visit <https://www.accommodation.cam.ac.uk/>. The Shared Equity Scheme and the Reimbursement of Relocation Expenses Scheme provide financial assistance to qualifying new members of staff with the costs of relocating to Cambridge.

Accommodation Service

The University Accommodation Service helps staff, students and visiting scholars who are affiliated to the University in their search for suitable accommodation in Cambridge. The dedicated accommodation team can provide access to a wide range of University-owned furnished and unfurnished properties, and has a database of private sector accommodation available for short and long-term lets. For further information and to register with this free service please visit <https://www.accommodation.cam.ac.uk/>



What Cambridge can offer

We offer a comprehensive reward package to attract, motivate and retain high performing staff at all levels and in all areas of work.

The University offers a wide range of competitive benefits, from family leave entitlement, to shopping and travel discount schemes. Our generous annual leave package contributes to the positive wellbeing of our University employees. Sabbatical leave enables academics to focus on research and scholarship, whilst still maintaining their full salary. The University also has a [career break scheme for academic and academic-related staff](#), with additional flexible working policies for all other staff.

Pay and benefits

The University salary structure includes automatic service-related pay progression in many of its grades and an annual cost of living increase. In addition to this, employees are rewarded for outstanding contribution through a number of regular pay progression schemes. The University offers attractive pensions schemes for employees, with an additional benefit of a salary exchange arrangement providing tax and national insurance savings. Payroll giving is also a simple, tax-efficient way for employees to make monthly donations to charity.



CAMbens employee benefits

We offer a CAMbens scheme for University employees, providing access to online and in-store shopping discounts and cashback. With more than 2,000 participating retailers, employees can save money on a wide range of household expenses, from groceries and clothes, to holidays and insurance and much more. A range of local discounts are also available, helping employees to save money whilst also supporting local Cambridge businesses and a CAMbens Cycle to Work salary sacrifice scheme is also available, which enables employees to save money on transport costs. A 10% discount rate on the [purchase of train season tickets, bulk buy tickets](#) and an interest free travel to work loan are also available for staff of the University.



What Cambridge can offer

Family-friendly policies

The University recognises the importance of supporting its staff. We have a range of family-friendly policies to aid employees' work-life balance including a generous maternity, adoption and shared parental leave entitlement of 18 weeks full pay and emergency family care support via My Family Care.

Other family-friendly support includes:

Our highly regarded workplace nurseries, a childcare salary exchange scheme and a high quality holiday Playscheme may be available to help support University employees with caring responsibilities (subject to demand and qualifying criteria). Further childcare information can be found here:

<https://www.childcare.admin.cam.ac.uk/>

The Newcomers and Visiting Scholars Group is an organisation within the University run by volunteers whose aim is to help newly arrived wives, husbands, partners and families of Visiting Scholars and members of the University to settle in Cambridge and give them an opportunity to meet local people. The Office of Postdoctoral Affairs supports the postdoctoral community within Cambridge. Further details are available here: <https://www.opda.cam.ac.uk/>

Your wellbeing

The University's Sport Centre, Counselling Services and Occupational Health are just some of the support services available to University employees to promote their physical and mental wellbeing. There are many societies in Cambridge catering for almost every taste and interest. Whether you want to take part in a sport, participate in music or drama, pursue a hobby, or join a political group, you will almost certainly find that a society exists for this purpose. The University also hosts the [Cambridge Science Festival](#) and [Cambridge Festival of Ideas](#), as well as [Open Cambridge](#) weekend, which together attract over 50,000 visitors per year. The festivals are a great opportunity to get your first taste of public engagement, through volunteering, supporting hands-on activities or proposing a talk.

Development opportunities

We support new employees to settle in through various activities. The encouragement of career development for all staff is one of the University's values and we put this into practice through various services and initiatives. Our Personal and Professional Development Department provides development opportunities and courses for all University employees. These include face-to-face sessions, online learning modules and webinars. Employees may also apply for financial support to undertake training that will lead to a qualification. We offer reduced staff fees for University of Cambridge graduate courses and the opportunity to attend lectures and seminars held by University departments and institutions. The CareerStart@Cam programme also supports employees in assistant staff roles who do not hold higher education qualifications to develop their skills, experience and qualifications.



How to apply

Applications should be submitted online via the University of Cambridge jobs page www.jobs.cam.ac.uk by clicking “Apply online” in the job advert. You will need an email address to register for our online system.

Conversations about flexible working are encouraged at the University of Cambridge. Please feel free to discuss flexibility prior to applying (using the contact information below) or at interview if your application is successful.

If you have any queries regarding the application process please email Estates Division on EDR@admin.cam.ac.uk.

The closing date for applications is: 2nd June 2024